



Helios 500

Intraoral Scanner





Why Helios 500?

Fit for your budget

Affordable price with excellent performance

Say goodbye to manual calibration

Automatic and adaptive calibration, free your hands

Enhancing digital workflow maximizing patient comfort

Smaller, lighter, with better accuracy Ideal for patients with sensitive teeth. (*featuring upgraded internal air duct.)



Accuracy

Full-arch accuracy = 20 μ m || Single-tooth accuracy \leq 10 μ m
*Accuracy results are from a third-party professional testing agency



Speed

Scan a full arch in less than 30 seconds with HELIOS 500



Weight

Only 185 grams, one of the most lightweight scanners on the market, well-balanced, ergonomically designed, and easy to carry



AI technology

AI technology filters the soft and moving tissues, offering users a smooth scanning experience and generating a natural-looking treatment outcomes



Orthodontic Simulation

AI-powered automatic tooth alignment provides clear orthodontic before-and-after comparisons helping doctors build patient confidence in treatment plans



Remote Control

Easily rotate 3D models by moving the scanner. Just need a long press to activate and perform remote controls.



Natural Color Display

Enjoy the color closely matching natural enamel, enhancing the quality of scanning



Tooth Measurement

Measure teeth in a straight line for examinations and data analysis



Undercut Detection

Effortlessly detect undercuts with a clear vertical view



Margin Line Drawing

Support margin line drawing within the software and import into CAD software

Helios 500



L
16mmx14mm
2 optional sizes



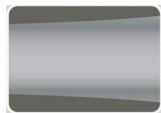
S
12mm x 12mm



Button for switching the upper jaw, lower jaw and bite mode



Detachable cable



Removable and 180° reversible tip

Firm body design with durability



Anti-Fogging Powder-Free LED structured-light imaging

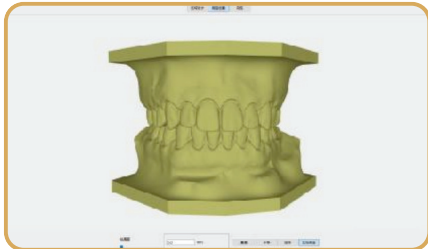


Just one power cable needed
Dismantle easily, Store effortlessly



Shining Mode

Specifically designed for scanning metal or light-colored tooth mold, increasing the success rate of scanning, ensuring clear and accurate captures

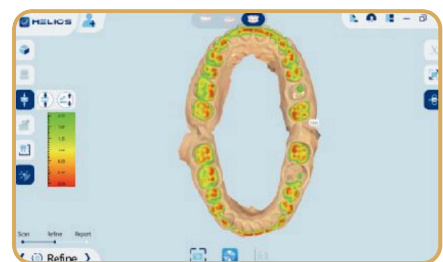


Model builder

Add bases to 3D models directly within the software, boosting efficiency for orthodontists and making it easier to save and share models

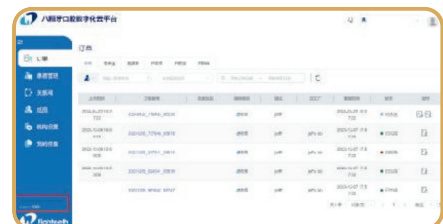
Occlusion Analysis

Post-scan, verify if there's sufficient space for restorations and ensure accurate occlusal relationships



Cloud Storage

Enjoy 100GB of cloud storage for free, enabling easy order sharing through Cloud



Specification

Helios 500

*Accuracy results are from a third-party professional testing agency.

Accuracy	Full-arch	20.0um
	Single-tooth	<10um
	Scan area	16 x 14mm (L)
12 x 12mm (S)		
Handpiece	Dimension	217x54x24mm
	Weight	185g
Tip	Tip size (front part)	22 x 18mm (L)
		18.6 x 16.7mm (S)
Connectivity	Length	1.8m/Handpiece detachable
	Type	USB 3.0
Calibration	Accuracy calibration	Calibration-free
	Color calibration	Calibration-free
Advanced Mode	Remote control	✓
Data	Output format	STL/PLY

Recommended System Requirements

Processor	Intel® Core™ i7-12700H Generation, base frequency 2.4 GHz (or better)
Memory	16GB (or more) DDR4, frequency 2666 MHz (or better)
Hard Drive	512GB (or more) SSD
Graphics Card	NVIDIA® GeForce® RTX 3050 (or better)
Display	15.6" FHD (1920 x 1080) (or more)
Others	USB 3.0 port
Operating System	Windows 10/11





AB MED INC.

Address: 6021 Yonge Street, Unit 319
Toronto, Ontario, Canada M2M 3W2
Email: custserv@abmed.ca
Phone: +1 905-288-8199

