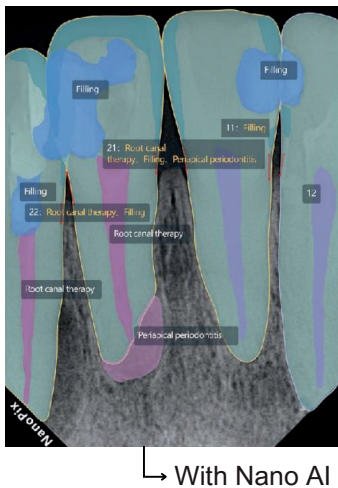
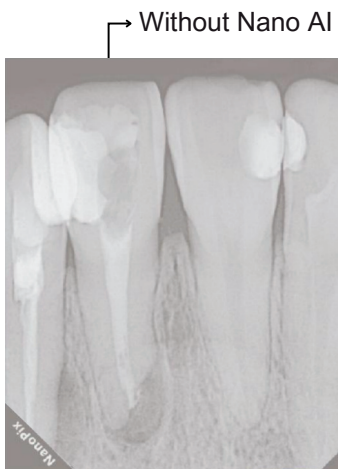




NanoPix1/1.5/2

Intraoral X-Ray Sensor





NanoAI Intelligent Diagnosis, One-Click Easy Recognition

- 4 Structures: Pulp, Enamel, Dentin, Bone Level
- 10 Diseases: Caries, Periapical Periodontitis, Root Canal Therapy, Filing, Restoration, Implant, Bridge, Calculus, Wedge-shaped Defect, Notable Margin
- Tooth Position



Boost Case Acceptance by 27%

- Visual diagnostic reports for patients' consultations providing 27 and satisfaction improving



Increase Clinic Revenue by 35%

- Diagnostic speed improvement leading to revenue growth



Stable AED Technology: Efficient Diagnosis and Treatment

- 3-second ultra-fast imaging, instant capture
- Automatic exposure detection, compatible with standard AC and DC X-ray equipment



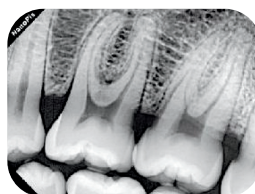
Precise Imaging: High Sensitivity APS CMOS Sensor

- Capture low-noise, high-resolution images for accurate diagnosis
- Low power consumption and long life



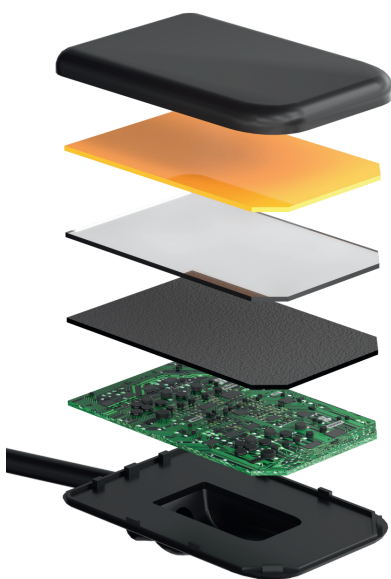
Protecting Health: Direct Distillation Technology for Cesium Iodide

- Low-dose capture of high-definition images reduces the need for extensive radiography experience, making imaging safer



25 lp/mm (theoretical) Resolution

- With 20µm pixel for detailed image performance





Ergonomic Rounded Corners

- Reduced pain sensation
- Improved patient comfort



4.4mm Ultra-thin Curved Design

- Fits the curvature of the finger for easier positioning
- Ultra-thin design to reduce the sensation of foreign objects in the patient's mouth



70,000+ Bend Tests

- Firm cable connection design for long-lasting durability



50,000+ Exposures without Loss of Output

- Imaging without degradation, providing long-lasting diagnostic capabilities



Cost-Effective

- No subsequent consumable expenses, leading to lower patient usage costs



Specifications(available in 3 sizes)

	NanoPix 1	NanoPix 1.5	NanoPix 2
Technology	APS CMOS	APS CMOS	APS CMOS
Scintillator	CsI	CsI	CsI
Pixel Matrix	1000×1500	1200×1650	1300×1800
Pixel Size	25 lp/mm	25 lp/mm	25 lp/mm
Active Area (mm)	20×30	24×33	26×36
Mechanical Size (mm)	25×38.5	43.5×29	31.6×45
Thickness (mm)	4.4	4.4	4.4
AD Conversion (bit)	≥16	≥16	≥16
Data Interface	USB 2.0	USB 2.0	USB 2.0
Protection	IP68	IP68	IP68



AB MED INC.

Address: 6021 Yonge Street, Unit 319
Toronto, Ontario, Canada M2M 3W2
Email: custserv@abmed.ca
Phone: +1 905-288-8199

