



# HyperLight

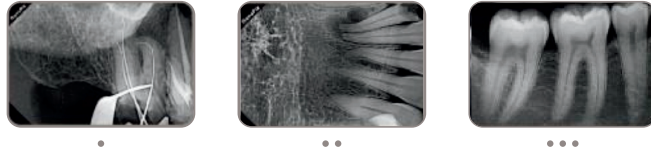
Portable X-ray unit



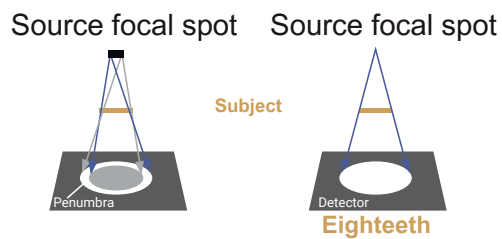


## Engineered for accurate images

### - Clinical Imagery



### - Sharp, high resolution images with a 0.4 focal spot



Effect of focal spot size



## Designed with safety in mind



Built-in leaded double shield to protect the operator from leakage radiation



Locking system to prevent unintentional exposure

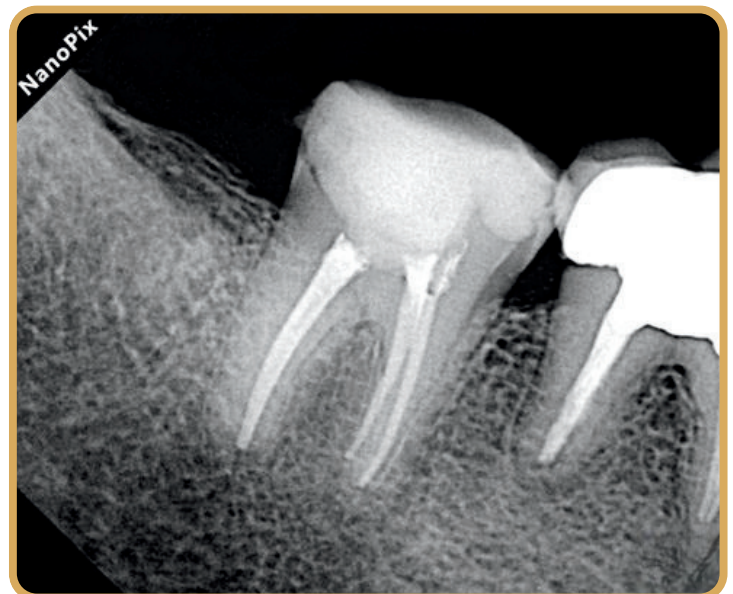
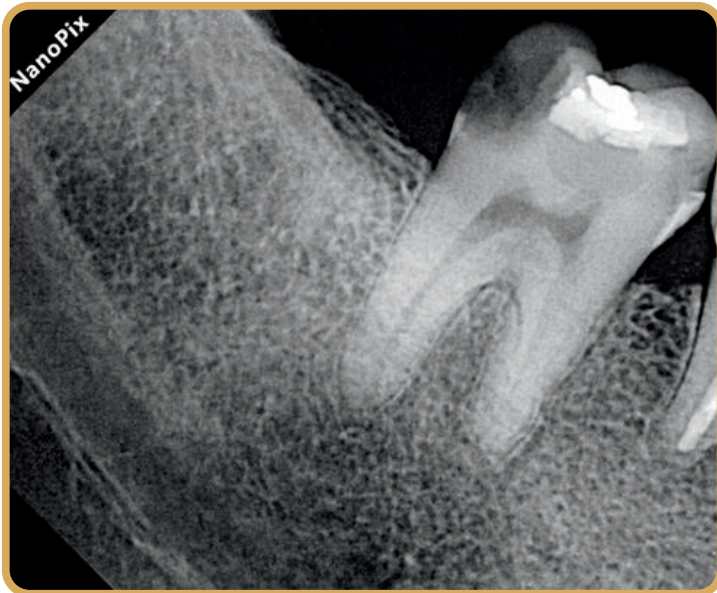
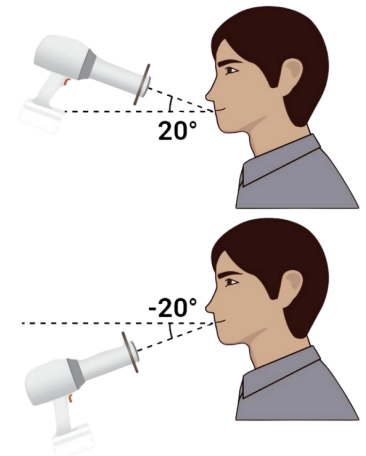
## Specifications

Model	HyperLight	Weight	1.8 kg
Focal Spot	0.4	Battery	2500 mAh x 4
Tube Voltage	65 kV	Exposure Time Range	0.02-2 Sec
Tube Current	2.5 mA	Line voltage	100V-240V, 50Hz/60Hz



## Simplify your digital workflow

- Compact size and lightweight can make you operate it by one hand only
- Intuitive user interface
- Smart angulation system





## **AB MED INC.**

Address: 6021 Yonge Street, Unit 319  
Toronto, Ontario, Canada M2M 3W2  
Email: [custserv@abmed.ca](mailto:custserv@abmed.ca)  
Phone: +1 905-288-8199

